

HYSTO SYSTEM II Disposable Automatic System

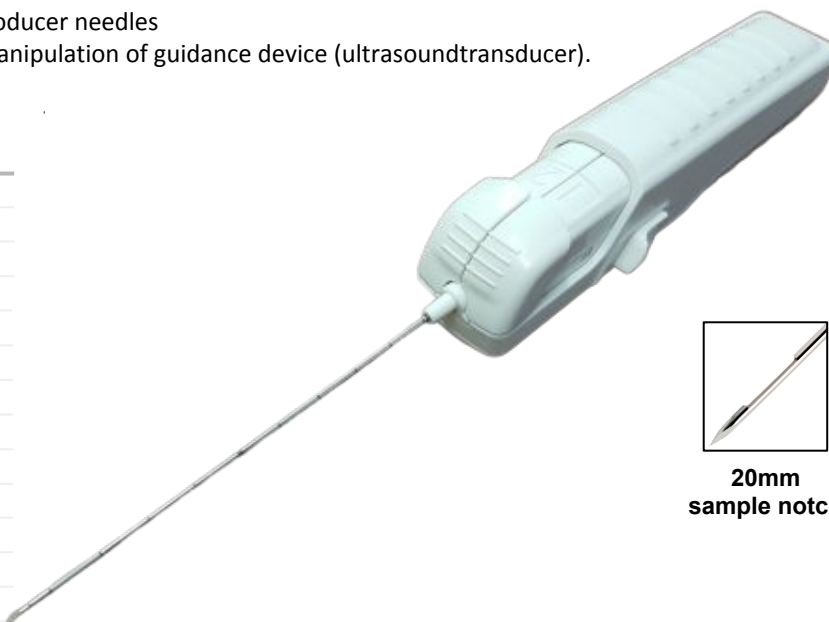
With two programmable firing modes, these lightweight automated systems give you the precise control and quality sampling capability you need when working with calcified or fibrous lesions. Available with or without coaxial introducer needle.

It can be easily operated with one hand, making it ideal for procedures requiring ultrasound guidance

- Large 20 mm sample notch
- Echogenic tip for accurate placement under ultrasound guidance
- Two fire trigger and one end operation
- Can be used with echogenic co-axial introducer needles
- One-handed operation for convenient manipulation of guidance device (ultrasoundtransducer).

HYSTO SYSTEM II Disposable Automatic Biopsy Needle (Box of 10 pcs)

ORDER NO.	DESCRIPTION
HSB 1410	14G x 10cm
HSB 1416	14G x 16cm
HSB 1420	14G x 20cm
HSB 1610	16G x 10cm
HSB 1616	16G x 16cm
HSB 1620	16G x 20cm
HSB 1810	18G x 10cm
HSB 1816	18G x 16cm
HSB 1820	18G x 20cm
HSB 1825	18G x 25cm
HSB 2010	20G x 10cm
HSB 2016	20G x 16cm
HSB 2020	20G x 20cm



20mm
sample notch

HYSTO SYSTEM II Co-axial Biopsy System

Allows multiple sampling from one percutaneous puncture with minimal damage to surrounding tissue.

- Trocar point tip maintains directional stability.
- Blunt tip cannula helps prevent inadvertent distal drift and may reduce risk of tissue trauma.
- Echogenic markings facilitate precise ultrasound positioning.
- Locking skin stop helps prevent forward migration.
- Matched in length to cutting cannula.

Co-axial needle to HYSTO SYSTEM II (Box of 10 pcs)

ORDER NO.	DESCRIPTION
CPX 1410	13G x 5cm, co-axial to HSB 1410
CPX 1416	13G x 11cm, co-axial to HSB 1416
CPX 1420	13G x 15cm, co-axial to HSB 1420
CPX 1610	15G x 5cm, co-axial to HSB 1610
CPX 1616	15G x 11cm, co-axial to HSB 1616
CPX 1620	15G x 15cm, co-axial to HSB 1620
CPX 1810	17G x 5cm, co-axial to HSB 1810
CPX 1816	17G x 11cm, co-axial to HSB 1816
CPX 1820	17G x 15cm, co-axial to HSB 1820
CPX 2010	19G x 5cm, co-axial to HSB 2010
CPX 2016	19G x 11cm, co-axial to HSB 2016
CPX 2020	19G x 15cm, co-axial to HSB 2020



Trocar stylet